



Version: 3.0 EN / Item no.: 00602-3-342

Mounting Instructions

PS 120 – 500 M1/M2 on AS 600-1200 M1

Please read carefully before start-up!

Translation of the original operating instructions



Table of contents

1	These parts must be present.....	3
1.1	General.....	3
1.2	AS600 mounting kit PS120-300 07017-2-016	3
1.3	AS600 mounting kit PS120-500 for headstock 07017-2-017	3
1.4	AS900 mounting kit PS120-200 07016-2-037	4
1.5	AS900 mounting kit PS120-500 for headstock 07016-2-038	4
1.6	AS900 mounting kit scissor folding PS120-500 07021-2-017	5
1.7	AS900 mounting kit scissor folding PS120-500 for headstock 07021-2-013.....	5
1.8	AS1200 mounting kit PS 120-500 07015-2-104	6
1.9	AS1200 mounting kit PS120-500 for headstock 07015-2-073	6
2	Mounting PS 120-500 M1/M2.....	7
2.1	Installation of the PS bracket, platform kit, and headstock	7
2.2	PS – installation	8
2.3	PS installation on the AS 600&900	9
2.3.1	AS 600&900 without headstock	9
2.3.2	AS 600&900 with headstock	9
2.4	Dispersion plate installation	10
3	Hose lengths.....	12
4	Hose routing	12
4.1	Connection of the hoses on the seeder.....	12
4.2	Laying the hoses to the tine sections	13
5	Connecting the hoses to the dispersion plates	16
6	Final check.....	17
7	Notes	18

1 These parts must be present

1.1 General

- Your pneumatic seeder PS 120 – 500 M1/M2 1 pc
Here, depending on the pneumatic seeder and number of outlets,
the following parts are included in various quantities:
 - 00600-3-627 Hose PVC 25x2.4
 - Either 04000-3-478 Dispersion plate 2
 - or 0400-3-057 Dispersion plate D 2
 - 00600-3-331 Hinge bolt clamp 32-35 20
- 07015-2-074 Headstock 1 pc
- 07015-2-014 Platform kit 1 pc
- A mounting kit, depending on which tined weeder and
which pneumatic seeder are present 1 pc
 - See points 1.2 - 1.9

1.2 AS600 mounting kit PS120-300 07017-2-016

- 00600-2-271 Expander connector tube 48-40 8 pcs
- 00601-3-388 U-bracket 12x66x110 3 pcs
- 07015-2-131 Blech5 dispersion plate bracket galvanized 4 pcs
- 07015-2-132 Blech5 dispersion plate bracket mir galvanized 4 pcs
- BN161-M12 Lock nut 6 pcs
- BN41200-M6x16 Hex bolt with flange 16 pcs
- BN56-M8x50 Hex bolt 8 pcs
- BN6783-M6 Flange nut 16 pcs
- BN715-M12 Washer 6 pcs
- BN715-M8 Washer 8 pcs

1.3 AS600 mounting kit PS120-500 for headstock 07017-2-017

- 00600-2-271 Expander connector tube 48-40 8 pcs
- 00601-3-388 U-bracket 12 pcs66 pcs110 2 pcs
- 07015-2-130 HPF EN10216-1 33.7x3.2 55 galvanized 2 pcs
- 07015-2-131 Blech5 dispersion plate bracket galvanized 4 pcs
- 07015-2-132 Blech5 dispersion plate bracket mir galvanized 4 pcs
- 07017-2-011 PS bracket AS600-900 1 pc
- 07017-2-012 PS bracket AS600-900 support 1 pc
- 07017-5-008 Sheet metal profile ANBB23 1 pc
- BN161-M14 Lock nut 2 pcs
- BN161-M24 Lock nut 2 pcs
- BN41200-M12x35 Hex bolt with flange 10 pcs
- BN56-M12x35 Hex bolt 6 pcs
- BN56-M12x40 Hex bolt 4 pcs
- BN56-M12x45 Hex bolt 2 pcs
- BN56-M14x45 Hex bolt 2 pcs
- BN56-M24x150 Hex bolt 2 pcs
- BN56-M8x50 Hex bolt 8 pcs
- BN6783-M12 Flange nut 26 pcs
- BN6783-M6 Flange nut 16 pcs
- BN715-M12 Washer 12 pcs
- BN715-M14 Washer 4 pcs
- BN715-M24 Washer 4 pcs
- BN715-M8 Washer 8 pcs

1.4 AS900 mounting kit PS120-200 07016-2-037

• 00600-2-271	Expander connector tube 48-40	12 pcs
• 00601-3-388	U-bracket 12x66x110	3 pcs
• 07015-2-131	Blech5 dispersion plate bracket galvanized	6 pcs
• 07015-2-132	Blech5 dispersion plate bracket mir galvanized	6 pcs
• BN161-M12	Lock nut	6 pcs
• BN41200-M6x16	Hex bolt with flange	24 pcs
• BN56-M8x50	Hex bolt	12 pcs
• BN6783-M6	Flange nut	24 pcs
• BN715-M12	Washer	6 pcs
• BN715-M8	Washer	12 pcs

1.5 AS900 mounting kit PS120-500 for headstock 07016-2-038

• 00600-2-271	Expander connector tube 48-40	12 pcs
• 00601-3-388	U-bracket 12x66x110	2 pcs
• 07015-2-130	HPF EN10216-1 33.7x3.2 55 galvanized	2 pcs
• 07015-2-131	Blech5 dispersion plate bracket galvanized	6 pcs
• 07015-2-132	Blech5 dispersion plate bracket mir galvanized	6 pcs
• 07017-2-011	PS bracket AS600-900	1 pc
• 07017-2-012	PS bracket AS600-900 support	1 pc
• 07017-5-008	Sheet metal profile ANBB23	1 pc
• BN161-M14	Lock nut	2 pcs
• BN161-M24	Lock nut	2 pcs
• BN41200-M12x35	Hex bolt with flange	10 pcs
• BN41200-M6x16	Hex bolt with flange	24 pcs
• BN56-M12x35	Hex bolt	6 pcs
• BN56-M12x40	Hex bolt	4 pcs
• BN56-M12x45	Hex bolt	2 pcs
• BN56-M14x45	Hex bolt	2 pcs
• BN56-M24x150	Hex bolt	2 pcs
• BN56-M8x50	Hex bolt	12 pcs
• BN6783-M12	Flange nut	26 pcs
• BN6783-M6	Flange nut	24 pcs
• BN715-M12	Washer	12 pcs
• BN715-M14	Washer	4 pcs
• BN715-M24	Washer	4 pcs
• BN715-M8	Washer	12 pcs

1.6 AS900 mounting kit scissor folding PS120-500 07021-2-017

• 00600-2-271	Expander connector tube 48-40	17 pcs
• 00603-3-676	Cotter pin 10 mm	1 pc
• 07015-2-120	Sheet metal profile ANBB13 RAL3020	1 pc
• 07015-2-121	Sheet metal profile ANBB13 mir RAL3020	1 pc
• 07015-2-123	PS bracket AS1200 03 RAL3020	1 pc
• 07015-2-130	HPF EN10216-1 33.7x3.2 55 galvanized	1 pc
• 07015-2-131	Blech5 dispersion plate bracket galvanized	6 pcs
• 07015-2-132	Blech5 dispersion plate bracket mir galvanized	6 pcs
• 09002-3-009	Top link pin CAT2 122 1 galvanized	1 pc
• BN161-M24	Lock nut	1 pc
• BN41200-M12x35	Hex bolt with flange	10 pcs
• BN56-M12x35	Hex bolt	6 pcs
• BN56-M12x45	Hex bolt	4 pcs
• BN56-M24x150	Hex bolt	1 pc
• BN56-M8x50	Hex bolt	12 pcs
• BN6783-M12	Flange nut	20 pcs
• BN6783-M6	Flange nut	24 pcs
• BN715-M12	Washer	10 pcs
• BN715-M24	Washer	2 pcs
• BN715-M8	Washer	12 pcs

1.7 AS900 mounting kit scissor folding PS120-500 for headstock 07021-2-013

• 00600-2-271	Expander connector tube 48-40	12 pcs
• 07015-2-061	PS bracket AS1200 02 mounted	1 pc
• 07015-2-130	HPF EN10216-1 33.7x3.2 55 galvanized	2 pcs
• 07015-2-131	Blech5 dispersion plate bracket galvanized	6 pcs
• 07015-2-132	Blech5 dispersion plate bracket mir galvanized	6 pcs
• BN161-M24	Lock nut	2 pcs
• BN41200-M12x35	Hex bolt with flange	10 pcs
• BN41200-M6x16	Hex bolt with flange	24 pcs
• BN56-M12x45	Hex bolt	4 pcs
• BN56-M24x150	Hex bolt	2 pcs
• BN56-M8x50	Hex bolt	12 pcs
• BN6783-M12	Flange nut	14 pcs
• BN6783-M6	Flange nut	24 pcs
• BN715-M12	Washer	4 pcs
• BN715-M24	Washer	4 pcs
• BN715-M8	Washer	12 pcs

1.8 AS1200 mounting kit PS 120-500 07015-2-104

• 00600-2-271	Expander connector tube 48-40	16 pcs
• 00603-3-676	Cotter pin 10 mm	1 pc
• 07015-2-120	Sheet metal profile ANBB13 RAL3020	1 pc
• 07015-2-121	Sheet metal profile ANBB13 mir RAL3020	1 pc
• 07015-2-123	PS bracket AS1200 03 RAL3020	1 pc
• 07015-2-130	HPF EN10216-1 33.7x3.2 55 galvanized	1 pc
• 07015-2-131	Blech5 dispersion plate bracket galvanized	6 pcs
• 07015-2-132	Blech5 dispersion plate bracket mir galvanized	6 pcs
• 09002-3-009	Top link pin CAT2 122 1 galvanized	1 pc
• BN161-M24	Lock nut	1 pc
• BN41200-M12x35	Hex bolt with flange	10 pcs
• BN41200-M6x16	Hex bolt with flange	32 pcs
• BN56-M12x35	Hex bolt	6 pcs
• BN56-M12x45	Hex bolt	4 pcs
• BN56-M24x150	Hex bolt	1 pc
• BN56-M8x50	Hex bolt	16 pcs
• BN6783-M12	Flange nut	20 pcs
• BN6783-M6	Flange nut	32 pcs
• BN715-M12	Washer	10 pcs
• BN715-M24	Washer	4 pcs
• BN715-M8	Washer	16 pcs

1.9 AS1200 mounting kit PS120-500 for headstock 07015-2-073

• 00600-2-271	Expander connector tube 48-40	16 pcs
• 07015-2-061	PS bracket AS1200 02 mounted	1 pc
• 07015-2-130	HPF EN10216-1 33.7x3.2 55 galvanized	2 pcs
• 07015-2-131	Blech5 dispersion plate bracket galvanized	8 pcs
• 07015-2-132	Blech5 dispersion plate bracket mir galvanized	8 pcs
• BN161-M24	Lock nut	2 pcs
• BN41200-M12x35	Hex bolt with flange	10 pcs
• BN41200-M6x16	Hex bolt with flange	32 pcs
• BN56-M12x45	Hex bolt	4 pcs
• BN56-M24x150	Hex bolt	2 pcs
• BN56-M8x50	Hex bolt	16 pcs
• BN6783-M12	Flange nut	14 pcs
• BN6783-M6	Flange nut	32 pcs
• BN715-M12	Washer	4 pcs
• BN715-M24	Washer	4 pcs
• BN715-M8	Washer	16 pcs

2 Mounting PS 120-500 M1/M2

2.1 Installation of the PS bracket, platform kit, and headstock

- Unfold your tined weeder (AS) (see Figure 1).
- Now determine which PS bracket you have. There are two different types, as shown in Figures 2 and 3.



Figure 1: AS 1200 M1 unfolded

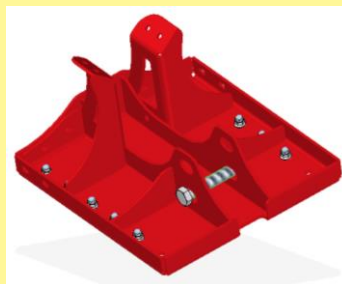


Figure 2: PS bracket
07015-2-061



Figure 3: PS bracket
07017-2-011

- If you have the PS bracket 07015-2-061, you must first install the two sheet metal profiles on the bracket, as shown in Figure 4.
- Now install the PS bracket on the headstock of the AS (see Figure 5 and 6).

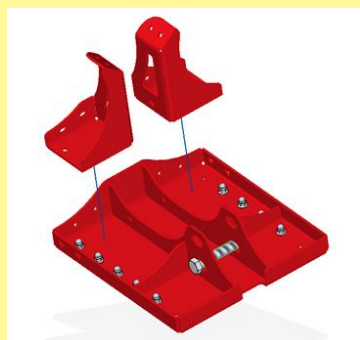


Figure 4: Installation of the two sheet metal profiles on the PS bracket
07015-2-061



Figure 5: Installation of the PS bracket on the headstock 1



Figure 6: Installation of the PS bracket on the headstock 2

- Now the platform kit (07015-2-014) will be assembled.
- To do so, install the railing on the right side of the top step at the points marked in Figure 7.
- Then install the ladder at the rear end of the platform (Figure 8).
- In the next step, install the step at the marked points (Figure 9).



Figure 7: Railing installed on the step



Figure 8: Ladder for the platform kit

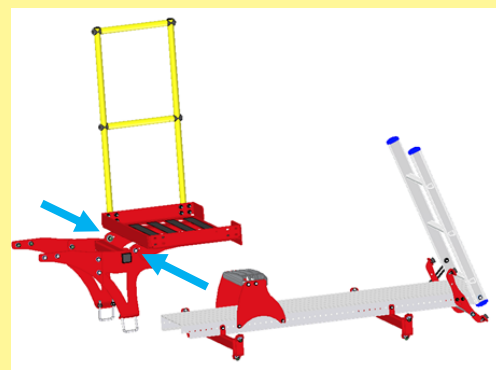


Figure 9: Installation of the step

- Install the platform kit on your AS, by bolting the step with the PS bracket and with the U-brackets on the support for the folding cylinder (see Figure 10 and Figure 11).
- The elongated step is installed on the frame of the two support stands with the cross beams marked in Figure 12.



Figure 10: Installation of the platform kit 1

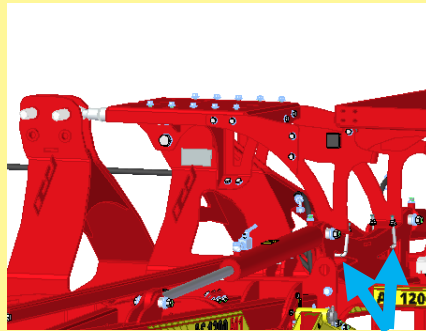


Figure 11: Installation of the platform kit 2



Figure 12: Platform kit installed on the frame of the support stands

- If present, install the additional headstock on your AS (Figure 13).



Figure 13: Additional headstock installed

2.2 PS – installation

- Mount the PS 120-500 with the hose outlets in the direction of travel. Fasten the PS with the supplied bolts (see Figure 14).



Figure 14: PS installation with hose outlets in the direction of travel

2.3 PS installation on the AS 600&900

2.3.1 AS 600&900 without headstock

On the AS 600 and AS 900, the PS can be directly mounted on the frame of the parking supports using a counter plate.

On the AS 600, a maximum of one PS 300 can be mounted. On the AS 900, a maximum of one PS 200.

To install the PS, the counter plate is mounted on the frame with the 3 U-brackets (see 1.2 & 1.4) (Figure 15).

Then fit on the PS and fasten it with the remaining bolts (Figure 16).

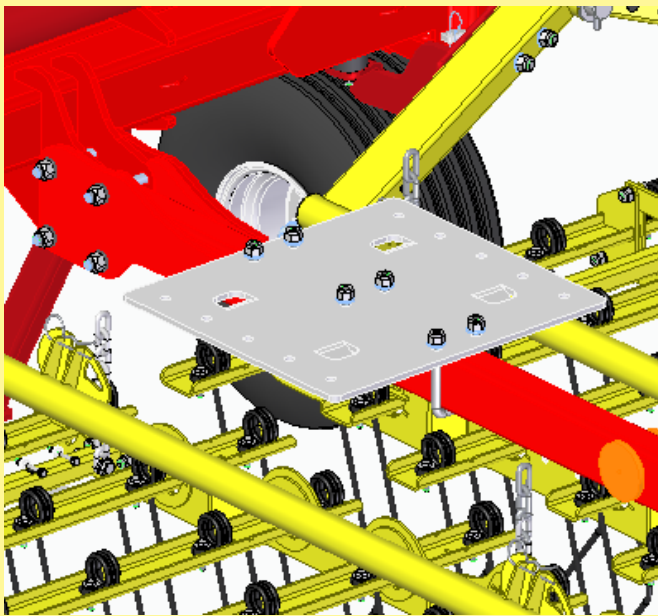


Figure 15: Installation of the counter plate

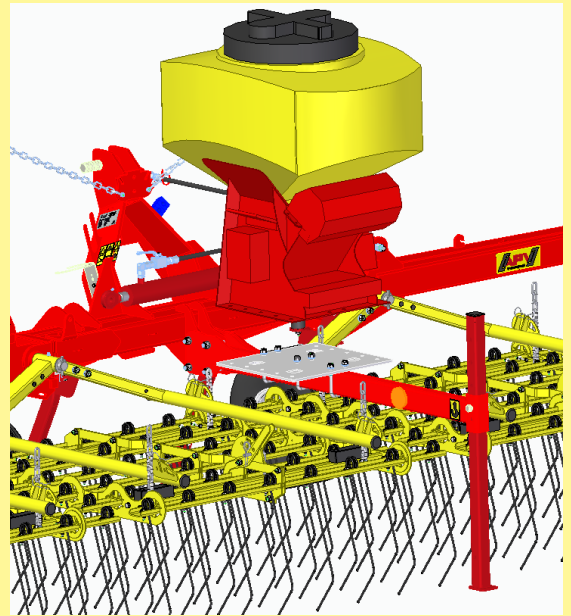


Figure 16: PS installation with hose outlets in the direction of travel

2.3.2 AS 600&900 with headstock

If you want to mount a PS 300 (AS900) as well as PS 500 (AS600/900) on an AS 600/AS 900, it is attached on the side on the AS600/900 PS bracket (Figure 17).

All of the parts required for this are listed in 1.3 & 1.4.

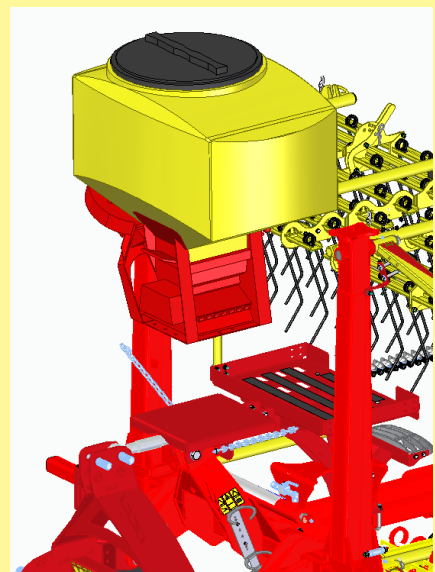


Figure 17 Mounting the PS on the side

2.4 Dispersion plate installation

- The dispersion plates are attached on the front side of the horizontal tubes of the tine section forks.
- To do this, the plastic plugs shown in Figure 18 and Figure 19 must be removed.

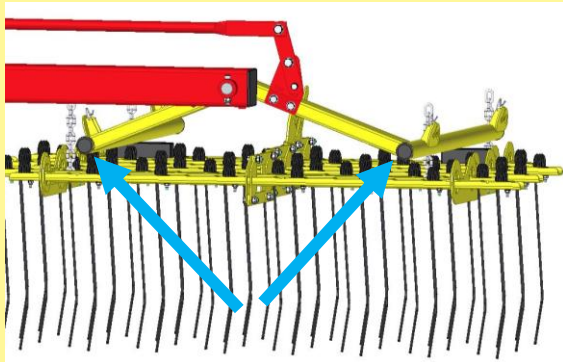


Figure 18: Plastic plugs on the tine section forks 1 that must be removed

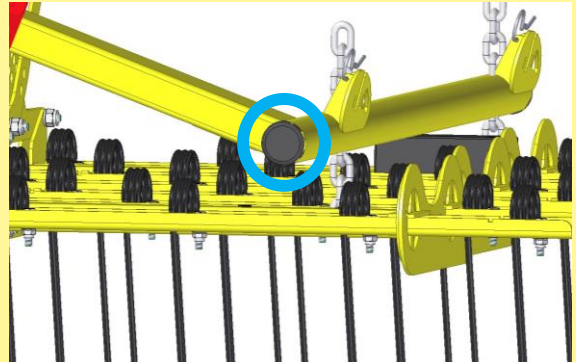


Figure 19: Plastic plugs on the tine section forks 2 that must be removed

- Now the dispersion plates together with brackets are mounted on the tine section forks.
- To do this, first position the expander connector flat in the tube; for example, this can be done using a rubber hammer.
- Then fasten the dispersion plate bracket on the expander connector. To do this, use an M8x50 bolt and provide an M8 washer.
- When this is done, the dispersion plate can be fastened on the dispersion plate bracket with two M6x16 bolts and M6 nuts.
- Repeat this step for all tine sections.
- The hinge bolt clamp will be required later for connecting the seed hose to the dispersion plate (see Point 5).

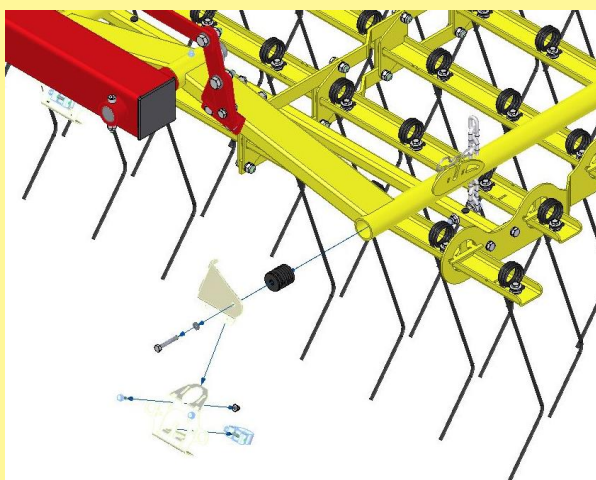


Figure 20: Dispersion plate installation on the tine section fork

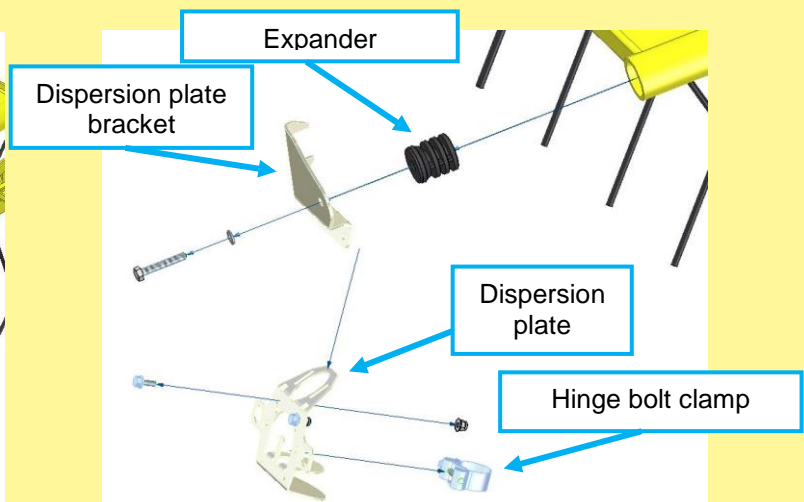


Figure 21: Components of the dispersion plate installation

- After complete execution of the dispersion plate installation the result should look the same as presented in the Figures below.

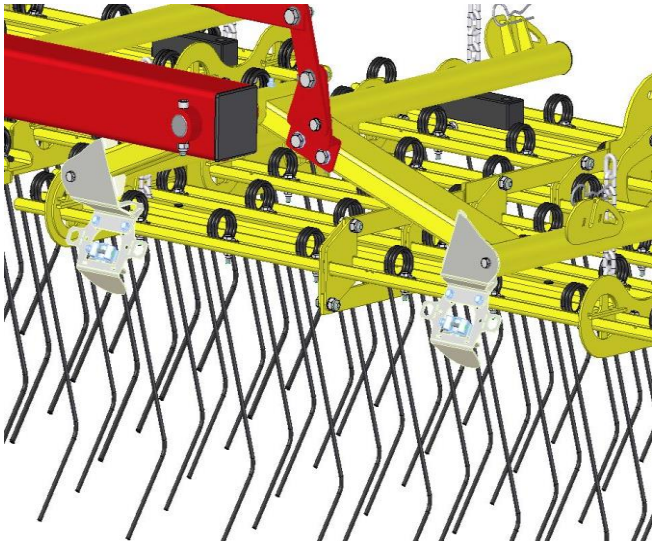


Figure 22: Dispersion plate installation 1 carried out completely

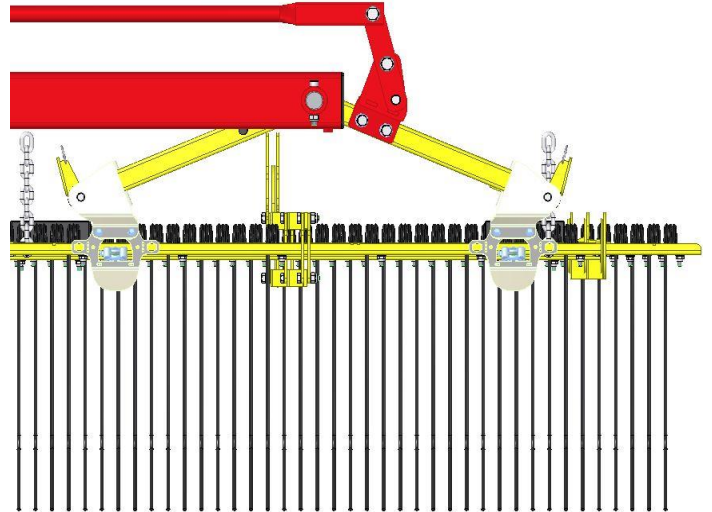


Figure 23: Dispersion plate installation 2 carried out completely



Figure 24: Dispersion plate installation 3 carried out completely



Figure 25: Dispersion plate installation 4 carried out completely

3 Hose lengths

- Due to the different machine types and different revision states of frame elements and assemblies, it is difficult to specify precise hose lengths for all tined weeders available on the market.
- Consequently, the length of the respective hoses must be adapted to each implement individually.
- To do this we recommend laying out the hoses, one after the other, along the route specified under Point 4 and then cutting them off in such a manner that a connection to the seeder or to the dispersion plates is possible.
- You can work either from the seeder to the dispersion plates, or from the dispersion plates to the seeder; it does not matter.

⇒ **When cutting the hoses, ensure that you make a straight cut!**

4 Hose routing

4.1 Connection of the hoses on the seeder

- Loosen the clamping screws on the clamping plate.
The number and type of clamping screws depend on the PS model that you have (see Figure 26 and Figure 27).
- Now insert the end of the hose into the black transition pieces up to the stop(!).
- Then retighten the clamping screws.

⇒ **If it is difficult to insert the hoses, using silicone spray on the outside of the hose can help!**

⇒ **On the other hand, if there is a certain amount of play between the hoses and the transition pieces, this is not a problem. Tighten the clamping screws to fix the ends of the hoses in place.**

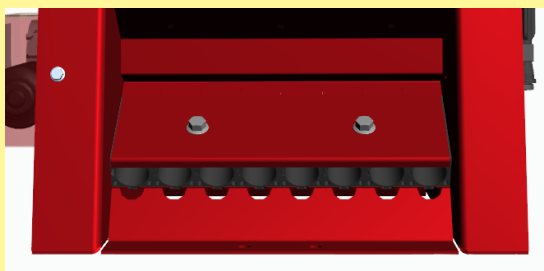


Figure 26: 2 clamping screws on the normal PS

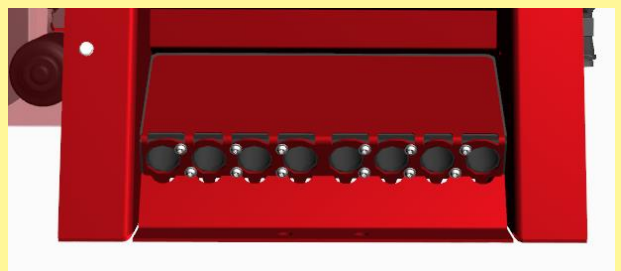


Figure 27: 12 clamping screws on a Fertilizer PS

- For the left side of the tined weeder, the outlets on the left of the PS are used.
- For the right side of the tined weeder, the outlets on the right of the PS are used.
- Lay the hoses downwards in a wide arc (see Figure 28 and 29).



Figure 28: Hose laying starting from the PS on the left side



Figure 29: Hose laying starting from the PS on the right side

4.2 Laying the hoses to the tine sections

⇒ Ensure that the hoses are laid out at the same points as shown in the figures, so that the hoses are not pinched when the implement is folded.

- The hoses to the sections on the center frame are each routed underneath the folding cylinder to the dispersion plates.
- They are fastened to the hydraulic hoses with cable ties, together with other hoses (see Figure 30 and Figure 31).



Figure 30: Routing the hoses under the folding cylinder 1

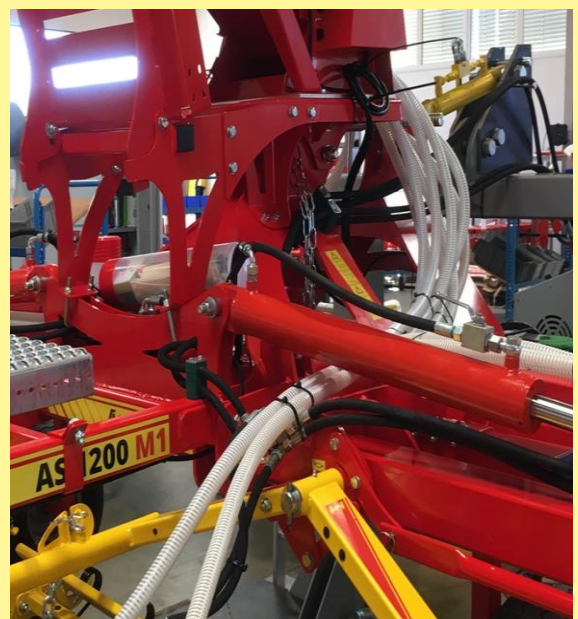


Figure 31: Routing the hoses under the folding cylinder 2

- The hoses for the next closest tine sections are laid, as shown in Figure 32, along the side frame and fastened with cable ties.
- The hoses are routed to the tine sections over the pivot point of the tine attachment (see Figure 33).
- The same applies to the opposite tine section.



Figure 32: Hose laying along the side frame



Figure 33: Hose laying over the pivot point of the tine section

- For the next tine sections, the hoses must be routed along the scissor folding element (see Figure 34).
- They must be fastened with cable ties as shown in Figure 35.
- Here as well, the hoses are laid over the pivot point of the tine section fastening.
- The same applies to the opposite tine section.



Figure 34: Hose laying along the scissor folding element



Figure 35: Fastening of the hoses for the scissor folding element

- The hoses for the outer tine sections are laid along the side frame and fastened with cable ties (see Figure 36).
- As shown in Figure 37, here as well the hoses are routed over the pivot point to the tine sections.



Figure 36: Hose laying along the frame to the outer tine sections



Figure 37: Hose laying over the pivot point of the tine section



Figure 38: Hose laying to the two outermost tine sections

5 Connecting the hoses to the dispersion plates

- When the hoses are all laid, they can now be mounted on the dispersion plates.
- To do this, guide the end of the hose through the opening in the large tab of the dispersion plate and slide the fastening clip (00600-3-331 Hinge bolt clamp 32-35 20) onto the hose.
- Now guide the end of the hose through the opening in the small tab on the dispersion plate.
- In the next step, attach the fastening clip on the dispersion plate in such a manner that the holding finger is positioned between the hose and the fastening clip and fixed in place by the hook of the holding finger.

⇒ **The hose must only protrude into the dispersion plate 1-2 mm to prevent seed blockages! (See Figure 39)**

- In addition the hinge bolt camp must be attached in such a manner that the bolt is located on the rear of the dispersion plate as shown in the figure below
- When the hose is correctly positioned, the fastening clip can be tightened and the hose at the large tab can be additionally secured with a cable tie.

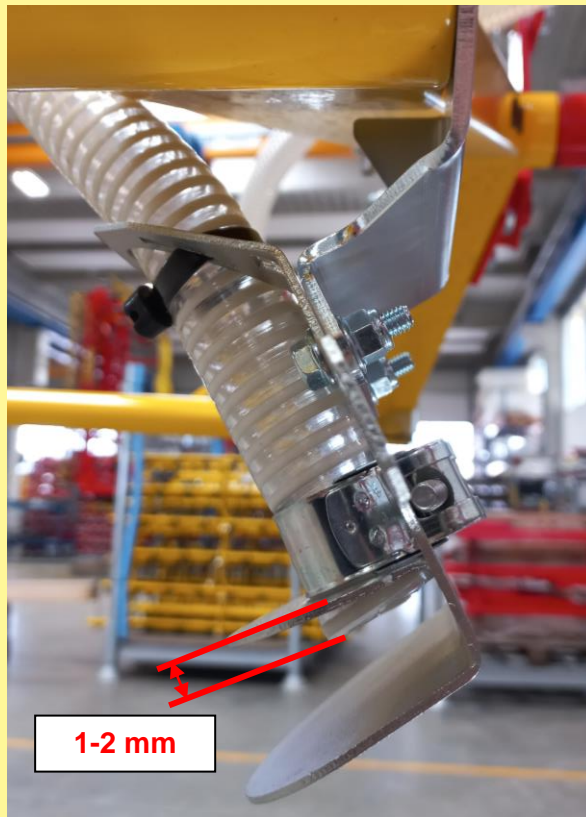


Figure 39: Dispersion plate with hose completely installed

6 Final check

- At the end, ensure that it is possible to fold the implement without crushing a hose, and that the hoses are firmly seated in the dispersion plates without being pulled out.



Figure 40: Correct installation of dispersion plate and hose 1



Figure 41: Correct installation of dispersion plate and hose 2

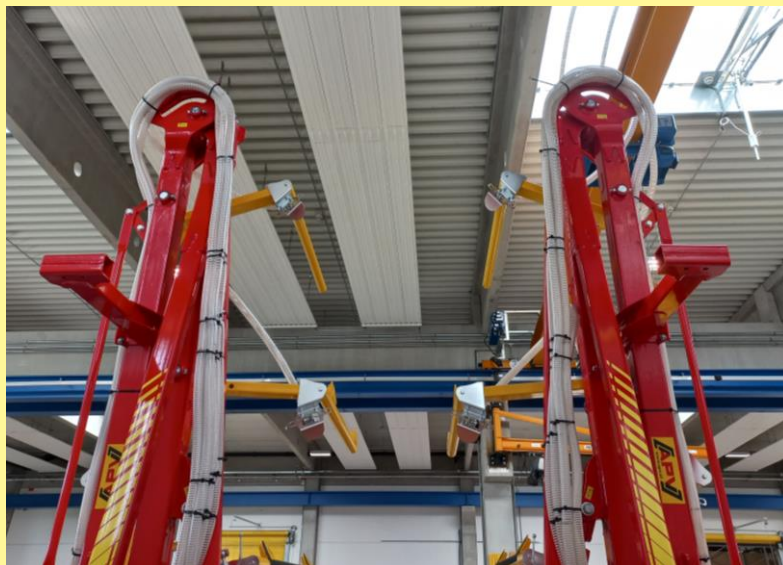
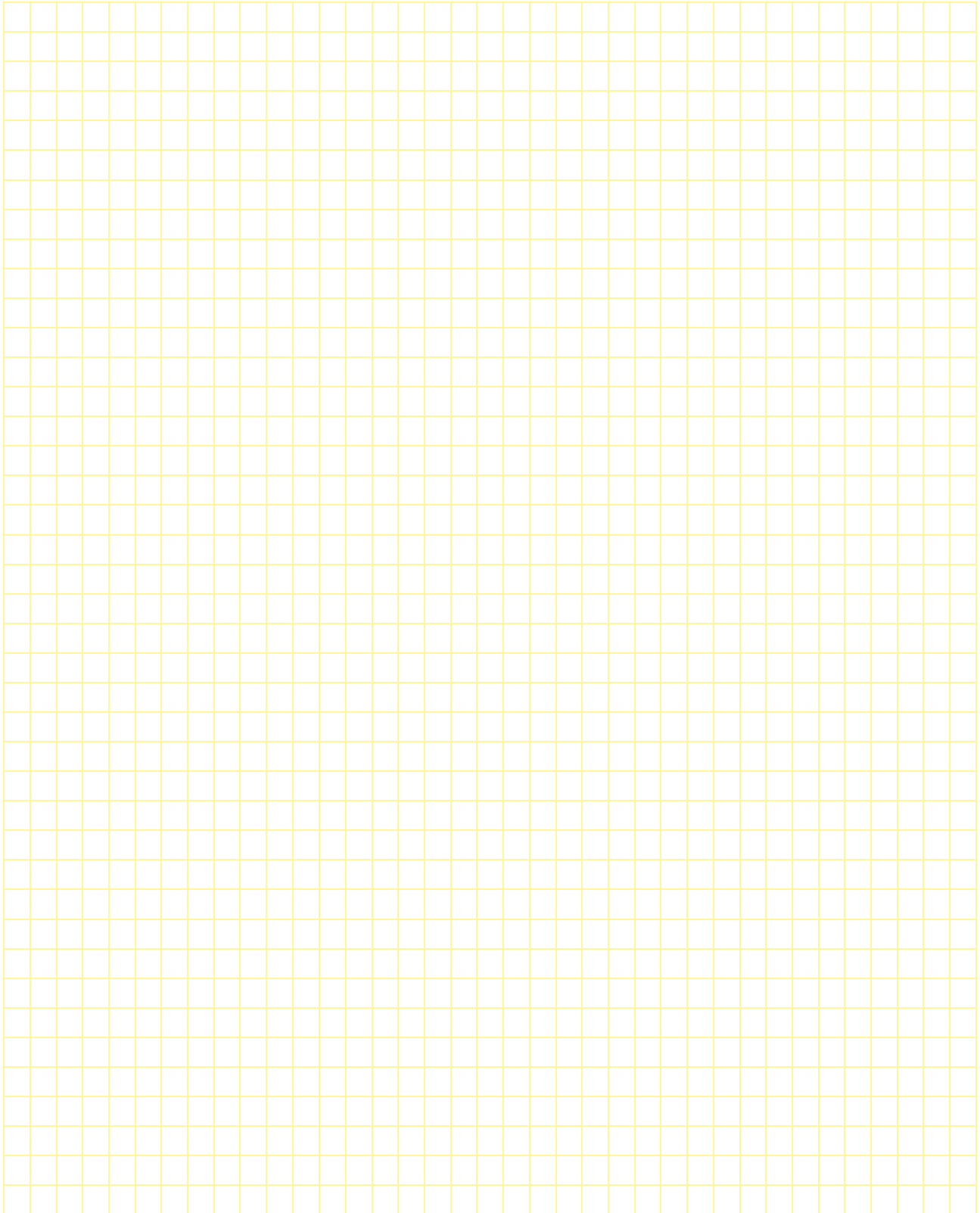
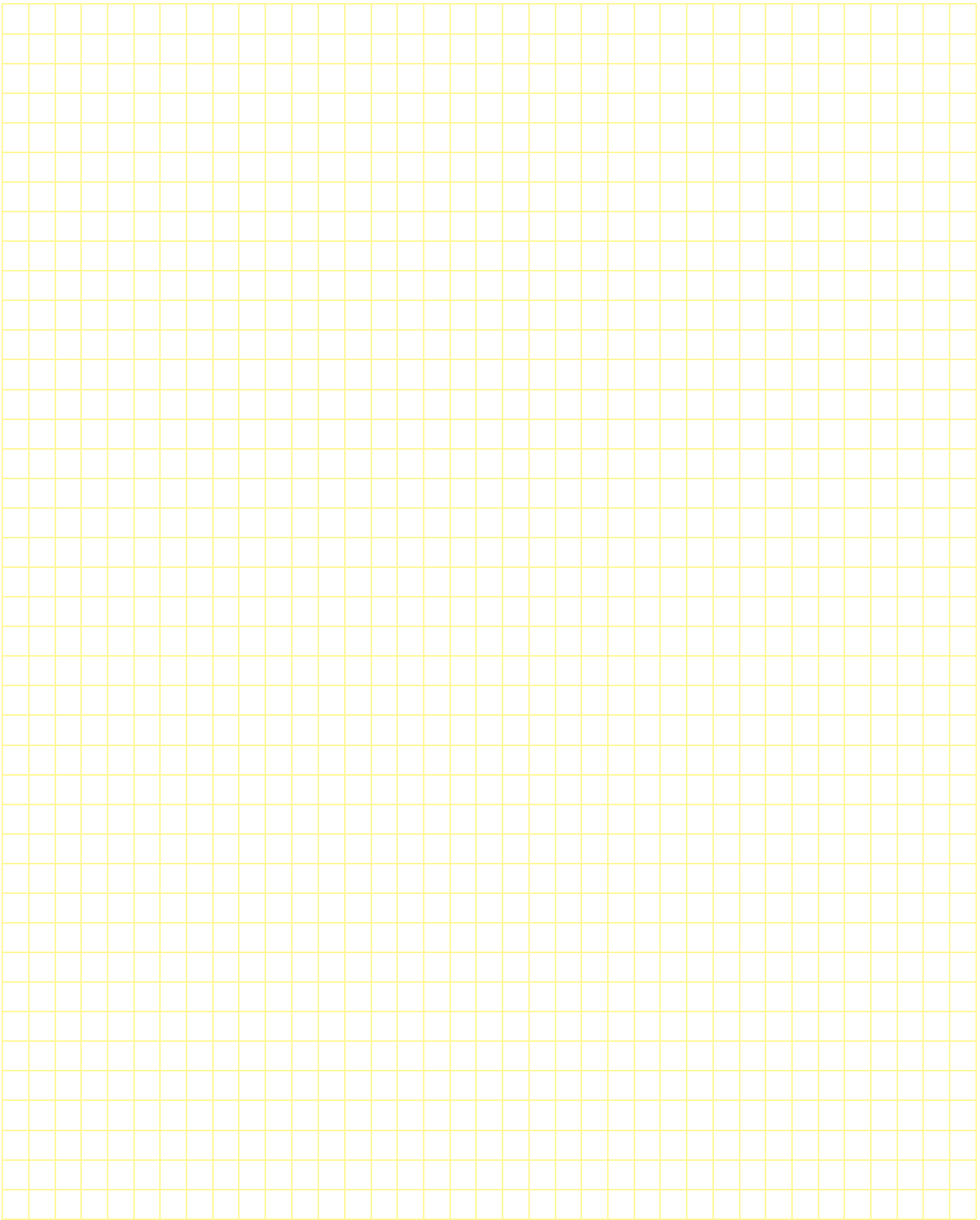


Figure 42: Correct installation of dispersion plate and hose 3

7 Notes





Qualität für Profis

- seit 1997 -



**APV – Technische Produkte GmbH
HEADQUARTERS**

Dallein 15, 3753 Hötzelstdorf, Austria

Telephone: +43 (0) 2913 / 8001

Fax: +43 (0) 2913 / 8002

E-mail: office@apv.at

Web: www.apv.at



APV Kompetenz-Center Nord GmbH

Oldenburger Strasse 219, 26203 Wardenburg, Germany

Telephone: +49 (0) 4407 / 71865-0

Fax: +49 (0) 4407 / 71865-19

E-mail: office@apv-deutschland.de

Web: www.apv-deutschland.de

Legal notice

APV – Technische Produkte GmbH, Managing Director: Ing. Jürgen Schöls, Dallein 15,
3753 Hötzelstdorf, Austria, marketing@apv.at, www.apv.at, VAT ID: ATU 5067 1107

APV Kompetenz-Center Nord GmbH, Managing Director: Ing. Jürgen Schöls, Oldenburger Strasse 219,
26203 Wardenburg, Germany, +49 (0) 4407 / 718650, office@apv-deutschland.de, www.apv-deutschland.de
Tax number: 64/213/01979, Registry Court: 26122 Oldenburg, DE, VAT ID No.: DE815600103

Photos: Company photos (© APV)