

AS EXTENSION

AS 600 M1 TO AS 900 M1 RIGID

CONVERSION INSTRUCTIONS



PLEASE READ CAREFULLY BEFORE INITIAL OPERATION!

Version: 1.0 EN; item number: 00602-3-434



TABLE OF CONTENTS

1	SCOPE OF DELIVERY	2
1.1	07017-2-027 Accessories kit AS 600 M1 to AS 900 M1 rigid without feeler wheels.....	2
1.2	07017-2-026 Accessories kit AS 600 M1 to AS 900 M1 rigid with feeler wheels.....	3
2	MOUNTING.....	4
2.1	Extension without feeler wheels	4
2.2	Extension with feeler wheels	6

1 SCOPE OF DELIVERY

1.1 07017-2-027 ACCESSORIES KIT AS 600 M1 TO AS 900 M1 RIGID WITHOUT FEELER WHEELS

Pieces	Item number:	Designation:
2	00600-3-075	Plastic plug 100x100
4	00600-3-357	Sticker APV logo 200x70
1	00601-3-344	Sticker AS900M1 03 850x78
1	00601-3-345	Sticker AS900M1 03 mirrored 850x78
8	00601-3-363	Plastic plug D17-d12-s4.4
2	07015-2-007	Tine section fork 02 mounted
2	07015-3-004	Spacer disc 51-35.5-4
2	07016-2-003	Flange frame AS900
2	07016-2-006	Welded assembly KG12
2	07016-2-007	Welded assembly KG12 mirrored
2	07016-3-002	Pin 45x300
4	07016-3-004	Folding linkage1
2	07016-3-005	Spacer disc tine section 12 mm
2	AAN26-6x65	Dowel pin
2	BN04-M10x80	Cylinder screw
2	BN161-M10	Lock nut
8	BN161-M12	Lock nut
6	BN161-M14	Lock nut
8	BN161-M16	Lock nut
2	BN337-10x65	Dowel pin
6	BN56-M14x45	Hexagonal bolt
8	BN56-M16x55	Hexagonal bolt
8	BN57-M12x110	Hexagonal bolt
16	BN715-M12	Washer
28	BN715-M14	Washer
16	BN715-M16	Washer

1.2 07017-2-026 ACCESSORIES KIT AS 600 M1 TO AS 900 M1 RIGID WITH FEELER WHEELS

Pieces	Item number:	Designation:
2	00600-3-075	Plastic plug 100x100
4	00600-3-357	Sticker APV logo 200x70
1	00601-3-344	Sticker AS900M1 03 850x78
1	00601-3-345	Sticker AS900M1 03 mirrored 850x78
8	00601-3-363	Plastic plug D17-d12-s4.4
2	07015-2-007	Tine section fork 02 mounted
2	07015-3-004	Spacer disc 51-35.5-4
2	07016-2-003	Flange frame AS900
2	07016-2-006	Welded assembly KG12
2	07016-2-007	Welded assembly KG12 mirrored
2	07016-3-002	Pin 45x300
4	07016-3-004	Folding linkage1
2	07016-3-005	Spacer disc tine section 12 mm
2	AAN26-6x65	Dowel pin
2	BN04-M10x80	Cylinder screw
2	BN161-M10	Lock nut
8	BN161-M12	Lock nut
6	BN161-M14	Lock nut
8	BN161-M16	Lock nut
2	BN337-10x65	Dowel pin
6	BN56-M14x45	Hexagonal bolt
8	BN56-M16x55	Hexagonal bolt
8	BN57-M12x110	Hexagonal bolt
16	BN715-M12	Washer
28	BN715-M14	Washer
16	BN715-M16	Washer
1	07016-2-012	Feeler wheel mounted04
1	07016-2-015	Feeler wheel mounted04 mirrored



CAUTION!

Before beginning with the conversion work, the AS must be unfolded and securely parked. Close off the hydraulic lines!

2 MOUNTING

2.1 EXTENSION WITHOUT FEELER WHEELS



Figure 1



Figure 2

- Unfold the AS 600 M1 (Figure 1).
- Remove the pivoting limiters on the outer tine sections (Figure 2).

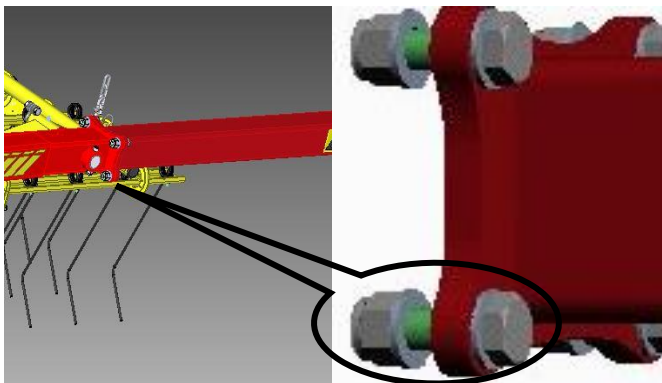


Figure 3

- Install the flange frame on the existing frame with the M16x55 hexagonal bolts and the M16 nuts and one M16 washer each (Figure 3).

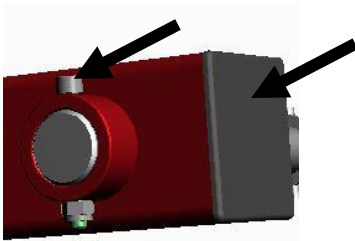


Figure 4

- Install the 45x300 pin in the flange frame and fasten it with a M10x80 cylinder screw and the M10 lock nut (Figure 4).
- Install the 100x100 plastic plug on the end of the flange frame (Figure 4).

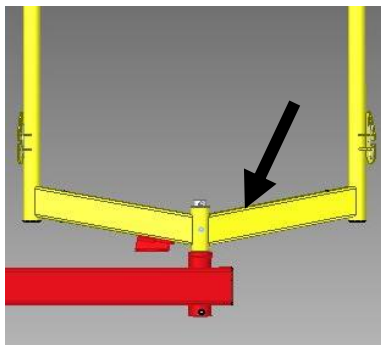


Figure 5

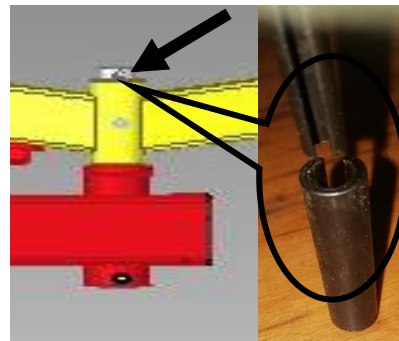


Figure 6

- Install the tine section fork on the flange frame (Figure 5).
- Install one spacer disc 51-35.5-4 and secure it initially with a 10x65 dowel pin, with the slit facing opposite to the direction of travel. Into this dowel pin, knock in a 6x65 dowel pin, with the slit facing in the direction of travel (Figure 6).

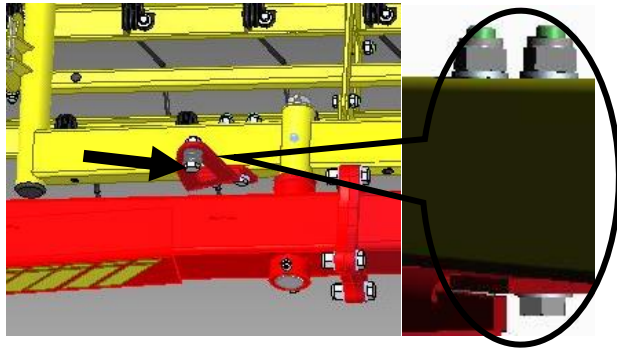


Figure 7

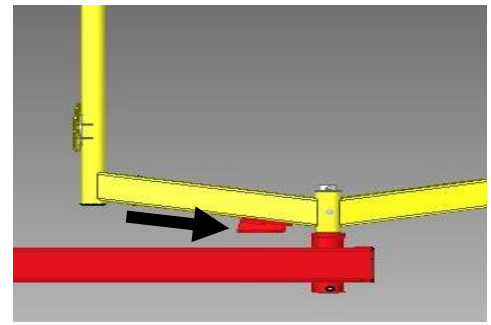


Figure 8

- Install the welded assembly KG12 instead of the previously removed pivoting limiter using the M12x110 bolts and M12 nuts as well as one M12 washer each (Figure 7).
- On the newly installed tine section fork, install another welded assembly KG12 with the M12x110 bolts and M12 nuts as well as one M12 washer each (Figure 8).

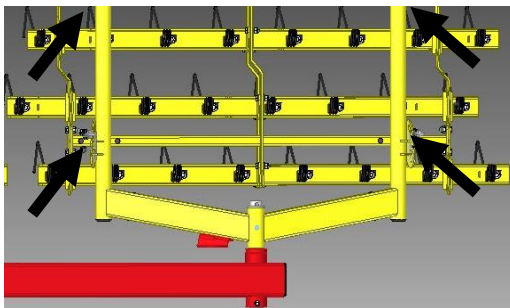


Figure 9

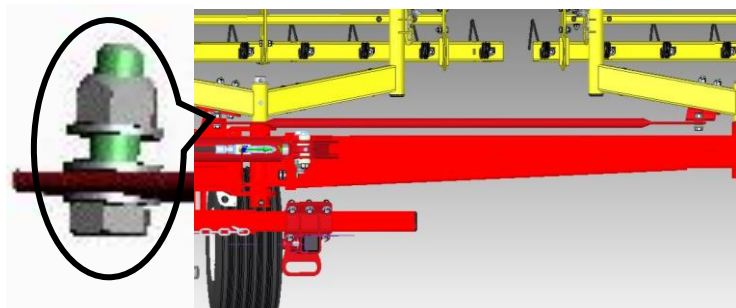


Figure 10

- Install the new tine sections on the tine section fork with the four chains and secure them with cotter pins (Figure 9).
- Between the centre frame and the first side tine section fork, install a folding linkage with the M14x45 bolts and M14 nuts as well as 3 M14 washers. The bolts are tightened firmly enough so that the linkage can still move (Figure 10).

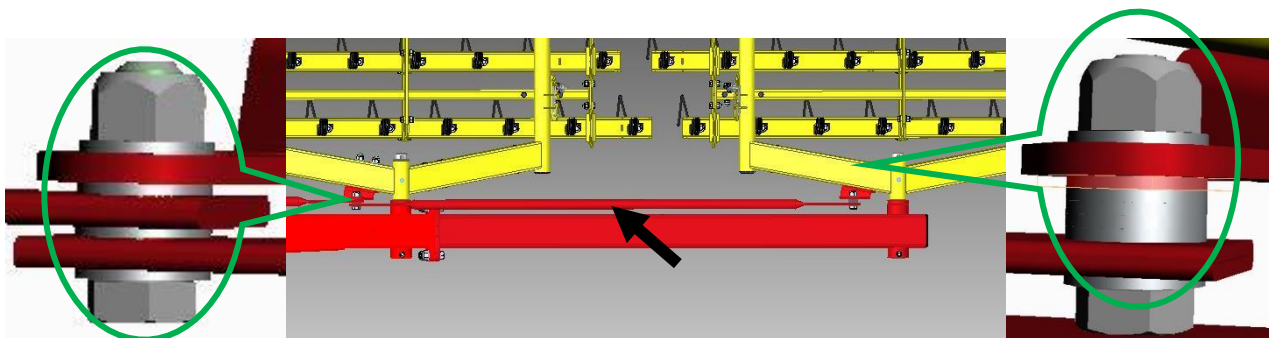


Figure 11

- Install another folding linkage for the outer tine section with the M14x45 bolts and M14 nuts as well as 4 M14 washers (Figure 11).
- On the outer tine section, fasten the folding linkage with the M14x45 bolts and M14 nuts as well as 7 M14 washers. The bolts are tightened firmly enough so that the linkage can still move (Figure 11).
- The AS 600 stickers are replaced with the AS 900 stickers.
- All of the extension steps performed until now must be repeated symmetrically on the other side.

2.2 EXTENSION WITH FEELER WHEELS

- The conversion from AS 600 to AS 900 with feeler wheels is performed at the beginning as described in Chapter 2.1 Extension without feeler wheels.



Figure 12

- The bracket for the feeler wheels is installed on the frame with the M12x35 bolts and M12 nuts as well as 1 M12 washer each (Figure 12).
- Proceed in the same way on the other side of the implement.



APV – Technische Produkte GmbH
Zentrale: Dallein 15
AT - 3753 Hötzelndorf

Tel.: +43 2913 8001
office@apv.at
www.apv.at

